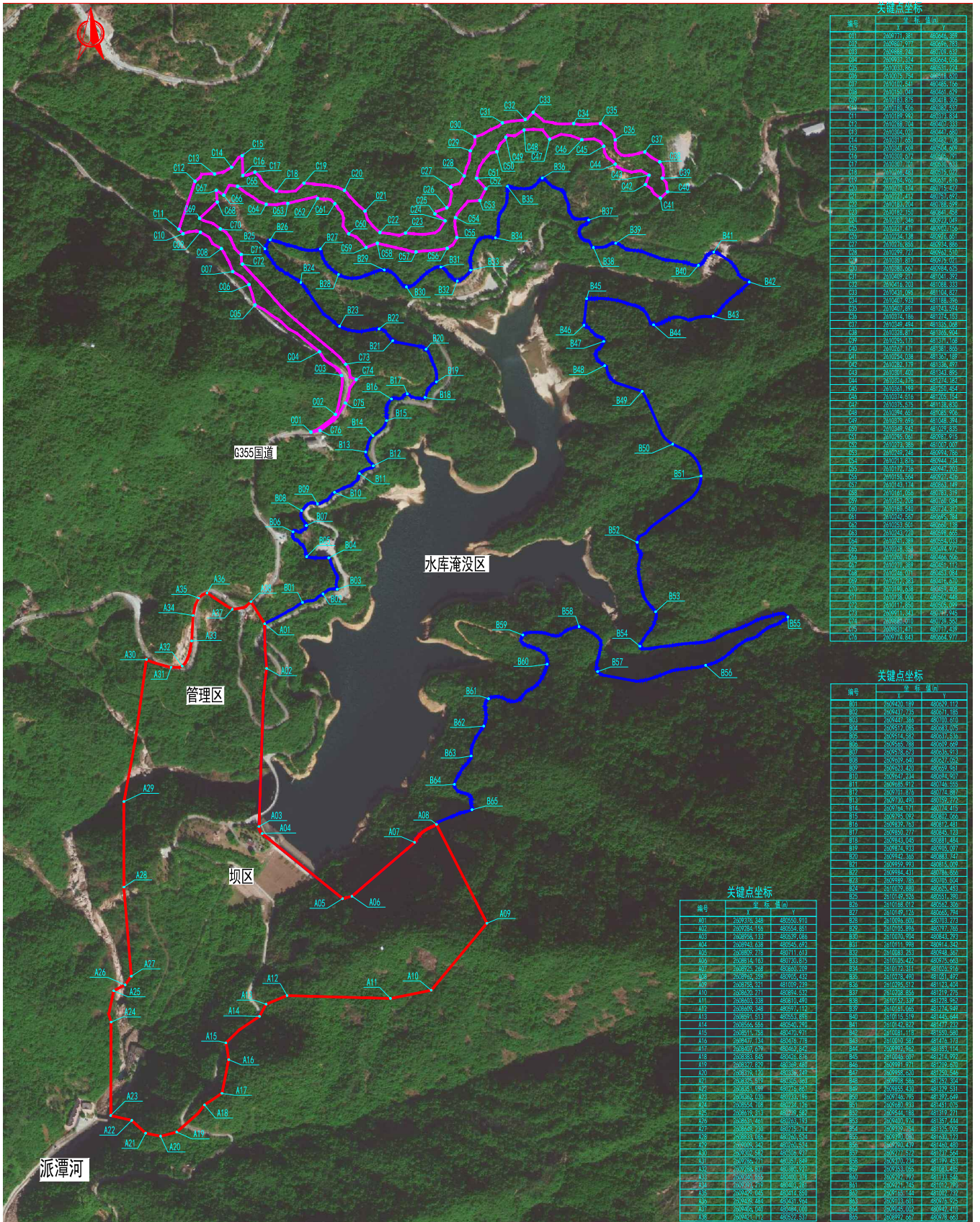


广州市增城区大封门水库扩容工程占地及淹没区范围示意图



关键点坐标

编号	X 坐标 (m)	Y 坐标 (m)
C01	209771.88	48044.89
C02	209869.57	48076.73
C03	209888.74	48100.83
C04	209919.84	48124.85
C05	209938.80	48151.24
C06	209973.74	48181.80
C07	209998.84	48214.92
C08	209958.07	48245.42
C09	209918.87	48274.84
C10	209878.92	48303.84
C11	209839.92	48331.84
C12	209798.704	48358.33
C13	209758.84	48384.86
C14	209717.65	48410.84
C15	209674.69	48436.46
C16	209630.87	48461.77
C17	209586.83	48486.84
C18	209542.83	48511.89
C19	209498.49	48536.81
C20	209454.19	48561.49
C21	209410.04	48585.87
C22	209366.04	48609.92
C23	209322.04	48633.87
C24	209278.04	48657.77
C25	209234.04	48681.55
C26	209190.04	48705.29
C27	209146.04	48728.92
C28	209102.04	48752.46
C29	209058.04	48775.87
C30	209014.04	48799.15
C31	208970.04	48822.35
C32	208926.04	48845.46
C33	208882.04	48868.46
C34	208838.04	48891.35
C35	208794.04	48914.15
C36	208750.04	48936.87
C37	208706.04	48959.55
C38	208662.04	48982.15
C39	208618.04	49004.77
C40	208574.04	49027.35
C41	208530.04	49049.87
C42	208486.04	49072.35
C43	208442.04	49094.77
C44	208398.04	49117.15
C45	208354.04	49139.55
C46	208310.04	49161.87
C47	208266.04	49184.15
C48	208222.04	49206.46
C49	208178.04	49228.77
C50	208134.04	49251.05
C51	208090.04	49273.35
C52	208046.04	49295.67
C53	208002.04	49317.92
C54	207958.04	49340.15
C55	207914.04	49362.35
C56	207870.04	49384.55
C57	207826.04	49406.77
C58	207782.04	49428.92
C59	207738.04	49451.05
C60	207694.04	49473.15
C61	207650.04	49495.29
C62	207606.04	49517.46
C63	207562.04	49539.55
C64	207518.04	49561.67
C65	207474.04	49583.77
C66	207430.04	49605.87
C67	207386.04	49627.92
C68	207342.04	49649.92
C69	207298.04	49671.92
C70	207254.04	49693.92
C71	207210.04	49715.92
C72	207166.04	49737.92
C73	207122.04	49759.92
C74	207078.04	49781.92
C75	207034.04	49803.92
C76	206990.04	49825.92
C77	206946.04	49847.92
C78	206902.04	49869.92
C79	206858.04	49891.92
C80	206814.04	49913.92
C81	206770.04	49935.92
C82	206726.04	49957.92
C83	206682.04	49979.92
C84	206638.04	49999.92
C85	206594.04	50020.92
C86	206550.04	50041.92
C87	206506.04	50062.92
C88	206462.04	50083.92
C89	206418.04	50104.92
C90	206374.04	50125.92
C91	206330.04	50146.92
C92	206286.04	50167.92
C93	206242.04	50188.92
C94	206198.04	50209.92
C95	206154.04	50230.92
C96	206110.04	50251.92
C97	206066.04	50272.92
C98	206022.04	50293.92
C99	205978.04	50314.92
C100	205934.04	50335.92

关键点坐标

编号	X 坐标 (m)	Y 坐标 (m)
B01	209420.189	48002.114
B02	209437.725	48031.183
B03	209455.261	48060.252
B04	209472.797	48089.321
B05	209490.333	48118.390
B06	209507.869	48147.459
B07	209525.405	48176.528
B08	209542.941	48205.597
B09	209560.477	48234.666
B10	209578.013	48263.735
B11	209595.549	48292.804
B12	209613.085	48321.873
B13	209630.621	48350.942
B14	209648.157	48380.011
B15	209665.693	48409.080
B16	209683.229	48438.149
B17	209700.765	48467.218
B18	209718.301	48496.287
B19	209735.837	48525.356
B20	209753.373	48554.425
B21	209770.909	48583.494
B22	209788.445	48612.563
B23	209805.981	48641.632
B24	209823.517	48670.701
B25	209841.053	48699.770
B26	209858.589	48728.839
B27	209876.125	48757.908
B28	209893.661	48786.977
B29	209911.197	48816.046
B30	209928.733	48845.115
B31	209946.269	48874.184
B32	209963.805	48903.253
B33	209981.341	48932.322
B34	209998.877	48961.391
B35	209998.877	48961.391
B36	209998.877	48961.391
B37	209998.877	48961.391
B38	209998.877	48961.391
B39	209998.877	48961.391
B40	209998.877	48961.391
B41	209998.877	48961.391
B42	209998.877	48961.391
B43	209998.877	48961.391
B44	209998.877	48961.391
B45	209998.877	48961.391
B46	209998.877	48961.391
B47	209998.877	48961.391
B48	209998.877	48961.391
B49	209998.877	48961.391
B50	209998.877	48961.391
B51	209998.877	48961.391
B52	209998.877	48961.391
B53	209998.877	48961.391
B54	209998.877	48961.391
B55	209998.877	48961.391
B56	209998.877	48961.391
B57	209998.877	48961.391
B58	209998.877	48961.391
B59	209998.877	48961.391
B60	209998.877	48961.391
B61	209998.877	48961.391
B62	209998.877	48961.391
B63	209998.877	48961.391
B64	209998.877	48961.391
B65	209998.877	48961.391
A01	209800.000	48961.391
A02	209800.000	48961.391
A03	209800.000	48961.391
A04	209800.000	48961.391
A05	209800.000	48961.391
A06	209800.000	48961.391
A07	209800.000	48961.391
A08	209800.000	48961.391
A09	209800.000	48961.391
A10	209800.000	48961.391
A11	209800.000	48961.391
A12	209800.000	48961.391
A13	209800.000	48961.391
A14	209800.000	48961.391
A15	209800.000	48961.391
A16	209800.000	48961.391
A17	209800.000	48961.391
A18	209800.000	48961.391
A19	209800.000	48961.391
A20	209800.000	48961.391
A21	209800.000	48961.391
A22	209800.000	48961.391
A23	209800.000	48961.391
A24	209800.000	48961.391
A25	209800.000	48961.391
A26	209800.000	48961.391
A27	209800.000	48961.391
A28	209800.000	48961.391
A29	209800.000	48961.391
A30	209800.000	48961.391
A31	209800.000	48961.391
A32	209800.000	48961.391
A33	209800.000	48961.391
A34	209800.000	48961.391
A35	209800.000	48961.391

图例

- 坝区用地范围线
- 水库淹没范围线
- 迁道路用地范围线

比例尺 0 50 100 150 200 250m
比例 1:5000